



Effects of flooding on the seed bank and soil properties in a conservation area on the Han River, South Korea



Hyohyemi Lee^{a,c,*}, Josu G. Alday^b, Kang-Hyun Cho^d, Eun Ju Lee^c, Rob H. Marrs^{b,*}

^a Bureau of Ecological Conservation Research, National Institute of Ecology, Seoecheon 325-813, South Korea

^b School of Environmental Sciences, University of Liverpool, Liverpool L69 3GP, UK

^c School of Biological Sciences, Seoul National University, Seoul 151-742, South Korea

^d Department of Biological Science, Inha University, Incheon, 402-751, South Korea

ARTICLE INFO

Article history:

Received 30 October 2013

Received in revised form 20 March 2014

Accepted 19 April 2014

Available online 20 May 2014

Keywords:

Soil physico-chemical properties

Seed bank

Flooding

Multivariate analysis

Conservation

Restoration

ABSTRACT

Flooding can have a major impact on riverside plant communities, and this is likely to be especially important in monsoonal climates, where large floods occur after heavy rain. In urban areas where riparian vegetation remnants are the only vegetation of conservation interest remaining, understanding the impacts that floods have on these ecosystems is needed to inform their future conservation. Accordingly, we assessed the impact of a flood caused by Typhoon “Ewinia” on the soil seed bank of five plant communities of the only remaining fragment of high-quality riverine habitat within the Seoul city stretch of the Han River (South Korea). We surveyed the seed bank composition of the five dominant plant communities before and after the flood. We also measured selected soil physico-chemical properties in each community. We used univariate and multivariate methods to examine the effect of the flood on both seed bank and soil physico-chemical properties. Flooding resulted in variable deposition of sediment within the plant communities; four communities varied from 14.6 to 18.8 cm but the fifth (dominated by *Miscanthus sacchariflorus*) had much less sediment (4.8 cm). The physico-chemical properties of the surface soil also changed after the flood, with the sediment particle size being the most affected. The species richness and composition of the seed bank suffered significant changes after the flood. In both cases there was a homogenization process, with was also impinged on species with different life-forms (annuals and perennials). Our results suggest that an extreme flood can affect the riparian vegetation seed bank by removing wetland plant species and allowing common and ruderal species to establish. There may also be different interactions between the different plant communities in terms of sediment capture and this translates into altered soil conditions and seed banks. These results are of use to conservation policy-makers aiming to conserve a native flora within severely modified urban rivers, and these remnant areas can provide an important seed source of wetland plants to aid restoration of riparian ecosystems.

© 2014 Elsevier B.V. All rights reserved.

1. Introduction

Natural river landscapes of the temperate regions can harbour a high biodiversity due to their high habitat heterogeneity and both lateral and longitudinal river connectivity (Naiman et al., 1993; Van Looy et al., 2009). The longitudinal exchange via water flow, creates areas of geo-diversity within river landscapes through the erosion, transportation and deposition of sediment (Stromberg et al., 2011).

Flooding is also a major factor in controlling biological community structure (Alves Pagotto et al., 2011), often moderating the relationships between the hydrological regime, soil structure (sediment), flora and fauna.

Riverine systems usually include the land within a water catchment, a network of streams which drain it, and its component flora and fauna (FISRWG, 1998). Riverine systems are, therefore, important landscape components from a holistic conservation perspective, being under great threat, especially those parts of the river flowing through urban areas (Gergel et al., 2002; Karr and Chu, 2000; Paul and Meyer, 2008). The remnant vegetation within urban river systems is usually highly-fragmented, degraded and susceptible to human disturbance. Many parts of the riverine system are subject to environmental pressures which affect both the chemical and physical environment, being some parts disturbed

* Corresponding author at: University of Liverpool, Liverpool L69 3GP, UK. Tel.: +44 979 108321/+44 1517955172; fax: +44 979 108440.

E-mail addresses: ejlee@snu.ac.kr (H. Lee), calluna@liverpool.ac.uk (R.H. Marrs).

on a regular basis by flooding which varies in extent and duration (Abernethy and Willby, 1999; Amiaud and Touzard, 2004; Capon and Brock, 2006; Cho and Cho, 2005; Hölzel and Otte, 2001; Jutila, 2001). When flooding occurs there is a large flow of water, usually resulting from heavy rain within the upstream catchment, and the effects can be severe, changing the river topography (Alves Pagotto et al., 2011; Schmidt et al., 2001; Stromberg et al., 2011; Yarie et al., 1998). However, in less severe cases, there is often sediment transport within the water flow which is deposited downstream (Hayashi et al., 2012). In these cases, the flood-deposited sediment provides an incoming source of both mineral and organic material, each containing nutrients, and of course plant propagules, i.e. seeds and vegetative fragments (Cockel and Gurnell, 2012; Riis and Baattrup-Pedersen, 2011). The role of seed banks in riverine restoration has recently been emphasized by Cui et al. (2013) who described species densities variations between river positions, sediment depth and pollutant loads. Flooding can have direct negative effects through both the erosion of plants and soils (Capon and Brock, 2006; Eldridge and Lunt, 2010), and through the physical deposition of flood-borne sediments (Chang, 2005; van der Valk et al., 1983); the latter killing newly-emergent seedlings and preventing seedling emergence as the surface soil is buried. Recovery after flooding can also be affected by the sediment deposition as it impinges on both soil physico-chemical characteristics and the seed bank, both of which could alter successional recovery. Here, therefore, we examine the impact of deposited sediment on the vegetation and soil seed bank in the floodplain of a refuge of semi-natural vegetation of conservation interest within a highly-modified river.

In this paper, we studied the flooding impacts within a refuge of semi-natural vegetation on the banks of the Han River within Seoul City (South Korea). The Han River is subject to annual flooding during the heavy monsoonal rainfall with exceptional peaks every 3–5 years. To minimize this flooding, water flows are managed in two ways: first, there are three large dams upstream from Seoul (Soyang, Chungju and Paldang dams; Kim, 2008), and second in Seoul, the river was channelized and embanked in the mid-1960s, providing public parks, roads, and car parks along the river banks (Woo, 2010). As a result, the previous ecological functions derived from the natural riparian vegetation have been lost within the urban reaches of the Han River. However, there are four refuge areas within the confines of the Seoul city where natural vegetation remains. Lee et al. (2011) described the plant communities and seed banks of these four refuges; though, three of these had suffered recent disturbance, and one, the Amsa wetland was shown to be the only remaining fragment of relatively-undisturbed, semi-natural riverine vegetation within the city reaches. Therefore, the Amsa refuge area is extremely important from a conservation view point as it retains some vegetation along with a bank of propagules in the soil which could assist in future river restoration strategies (Jeon et al., 2008; Kim and Ju, 2005; Lee et al., 2011).

More precisely, we studied the impact of the severe 2006 flood on the seed banks and soils of five plant communities types along a transect from the river through to the landward end within the Amsa wetland. This flood was generated as a result of exceptionally heavy, seasonal rainfall (typhoon 'Ewiniar') which produced one of the highest floods in the last 25 years. The effect of this flood on the riverine communities within the Amsa wetland was analyzed by measuring change before and after the flood in (1) a range of soil physico-chemical variables, and (2) the soil seed banks of the five dominant plant communities (Lee, 2010; Lee et al., 2011). It was hoped that this information would provide a preliminary assessment to help inform conservation planning of riverbank vegetation in protected areas.

2. Methods

2.1. Study site and flood event

The Han River is a major river in South Korea; it is 470 km long with a watershed area of 26,200 km² and flows through the capital Seoul through to the Yellow Sea (Fig. 1). Within the catchment, the average annual precipitation is 1294 mm, with 65% occurring between July and September. The Han River is subject to annual flooding during the heavy monsoonal rainfall with exceptional peaks every 3–5 years. The studied flood was generated as a result of exceptionally heavy, seasonal rainfall (typhoon 'Ewiniar') which produced one of the highest floods in the last 25 years (Fig. 2). Since 1984, the South Korean flood forecasting system has issued 13 flood alerts under two categories ('Flood advisory' and 'Flood warning'). The 2006 event was classified as "Flood advisory", and produced the 9th highest recorded water level at the Hang River Bridge monitoring station since 1920; indeed the monitoring station was itself flooded for 24 h.

Lee et al. (2011) described the plant communities and seed banks of the four refuges on the Han River; three of these had suffered recent disturbance, and one, the Amsa wetland (0.1 km², N37 33' 5.72", W127 7' 15.3", Fig. 1), was shown to be the only remaining fragment of relatively-undisturbed, semi-natural riverine vegetation within the city reaches. This site was designated an "Ecological Landscape Protected Area" to conserve this habitat in 2002, and has been fenced to prevent human access. Five plant communities were described at this site (Lee, 2010; Lee et al., 2011) forming a zonation from the river bank side to the land-side as follows (Fig. 1; Nomenclature follows Lee, 1999), i.e. Water-front (Wf), Bankside (Bn), and communities dominated by *Salix* sp. (Ss), *Phragmites australis* (Pa), and *Miscanthus sacchariflorus* (Ms). The Amsa wetland, therefore, contains a mosaic of habitats which would otherwise be absent from the urban reaches of the Han River, providing aesthetic and educational services as well as a semi-natural habitat much valued for migratory birds (Yoo and Choi, 2007).

2.2. Soil/sediment sampling for seed bank assessment and chemical analysis

The pre-flood soil physico-chemical conditions and seed bank characteristics were assessed in spring (March) of 2005 and 2006, respectively; there was a small flood in 2005. On both sampling occasions, five replicate 1 m² quadrats were located randomly within each of the five plant communities. At each of these quadrats, five soil cores were taken using a soil corer (Eijkelpkamp BV, Netherlands; corer dimensions = 5 cm diameter, 5 cm deep, 500 ml volume in total per sample). Seed bank assessment was performed in March because at this time all seeds available for germination over the summer would be present.

The post-flood conditions were measured on the site after the deposition of flood-derived sediments. In order to measure sedimentation rates, five replicate soil traps (plastic square plates, 25 × 25 cm) were placed in the each of the five communities 14 d before the flood. Immediately after the flood these were re-visited, depth and the total mass of sediment were measured in each trap, thereafter the sample were collected and moved to lab. Using the same corer of pre-flood samples, four cores were sampled from each soil trap for the seed bank analysis (400 ml volume in total per sample), and rest of the sample used for soil physico-chemical analysis.

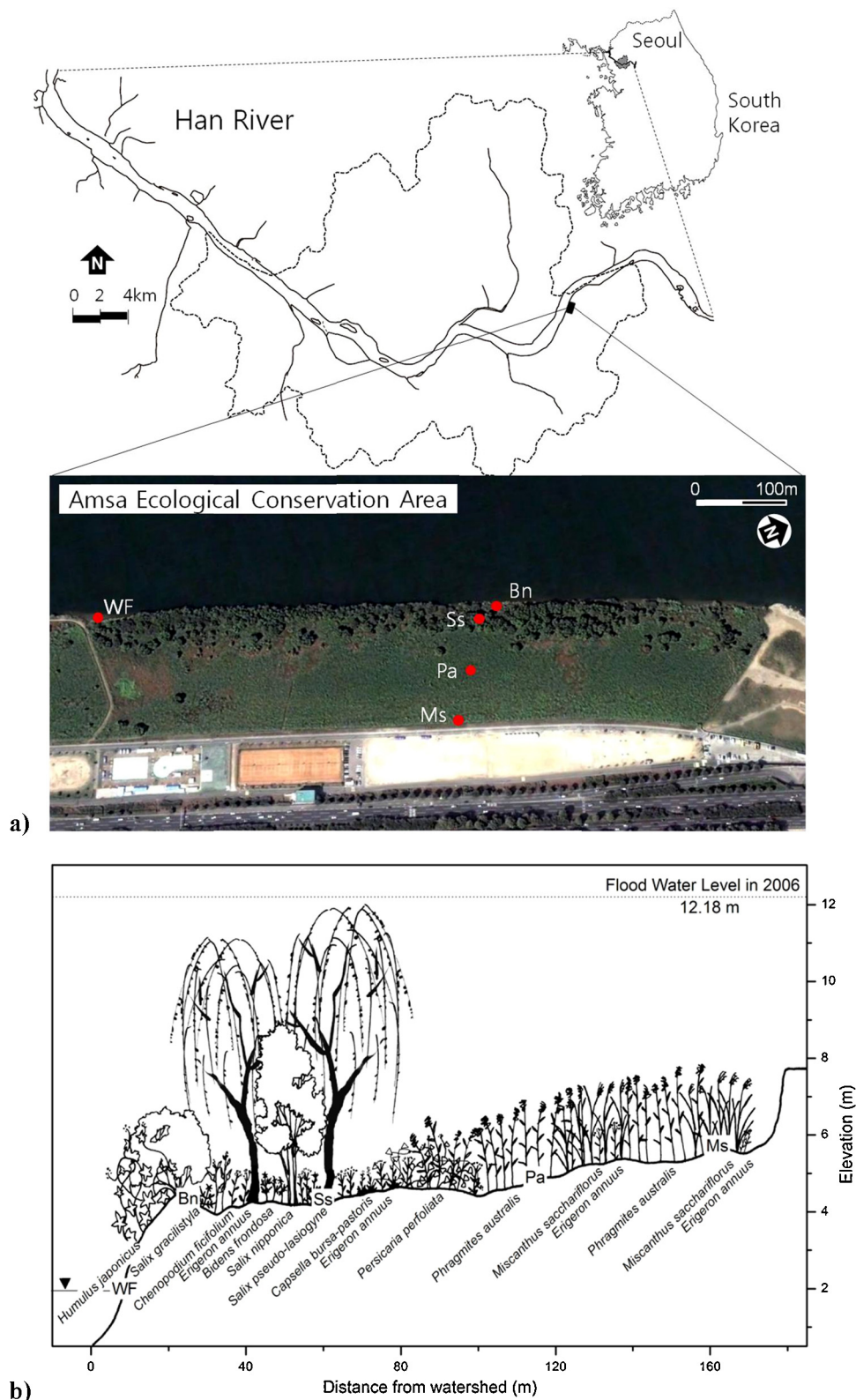


Fig. 1. (a) Location of the Amsa ecological conservation area on the Han River, Seoul, South Korea; (b) elevational profile of the five communities at the Amsa wetland: WF: Waterfront; Bn: Bank; Ss: *Salix* sp.; Pa: *Phragmites australis*; Ms: *Miscanthus sacchariflorus*.

2.3. Assessment of soil physico-chemical properties

Soil/sediment pH and electrical conductivity were measured in a 1:2 mixture of fresh soil in distilled water. Moisture content was then measured by weighing before, and after, drying

a sub-sample at 105 °C for 48 h. The organic matter content was estimated by loss-on-ignition (Heiri et al., 2001). Soil/sediment texture analysis was carried out by shaking 40 g in 300 ml of 5% sodium hexa-metaphosphate solution overnight. Following dilution to 1000 ml with the distilled water and shaking for 1 minute

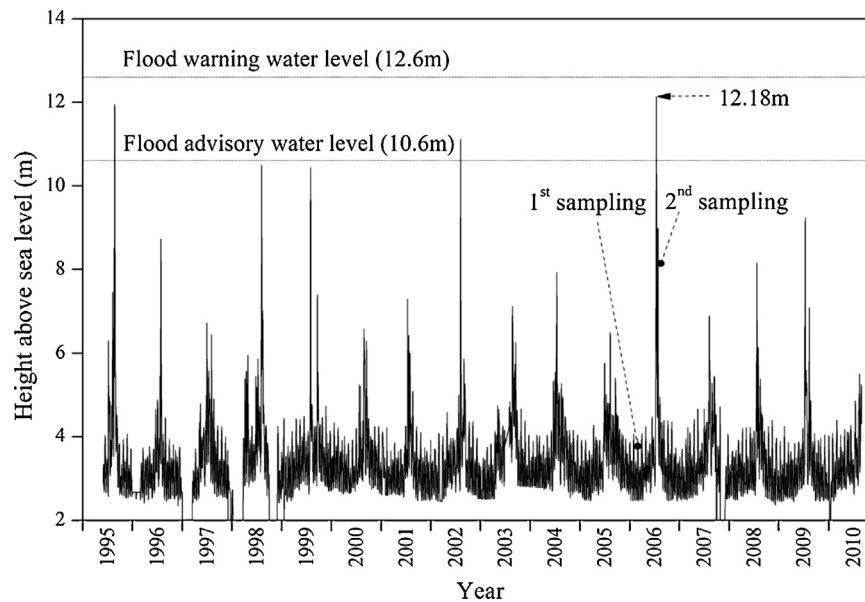


Fig. 2. The daily maximum water table record from June 1995 to August 2010 at the Hangang Bridge in Han River, Seoul, Korea indicating flood events.

at 60 rpm density measurements were made using a Bouyoucos soil hydrometer (USA/ASTM 151H) after 40 s and 7 h. Drops of Iso-amyl alcohol were added to remove bubbles if necessary (Sheldrick and Wang, 1993). Total nitrogen was analyzed using a Kjeldahl Protein/Nitrogen Analyzer (Automatic; Kjeltac Auto 1035/1038 System). Extractable phosphorus (EP) and exchangeable cations (Na, Mg, K, Ca) were extracted using Mehlich III solution (Sims et al., 2002); EP was analyzed using the ascorbic acid method (APHA, 1992) and exchangeable cations using an induced coupled plasma (ICP) emission spectrometer (Shimadzu/ICPS-7510).

2.4. Assessment of species in the seed bank

All soil/sediment samples for seed bank assessment were stored at 4 °C until the start of the seedling emergence experiment following Looney and Gibson (1995). All samples were then inspected and any roots or plant stems present were removed by hand; the samples were then placed in individual seed trays (44 × 30 × 7 cm) and transferred to a glasshouse where the trays were watered daily. Seedling emergence was observed for 16 weeks, during which time the minimum and maximum temperatures recorded in the glasshouse were 10.4 °C and 35.8 °C, respectively. Emergent seedlings were identified using Asano (2005) and counted every two weeks for 4 months; most seedlings emerged in the first ten weeks (Lee, 2010). Where identification was not possible the seedling was transferred to a separate pot and grown on until identification was possible. The seed numbers emerging were converted to seed densities on an area basis (m⁻²).

Species detected in the seed bank were classified into three life-form groups (annuals, perennials and biannual) using the database of “Korea biodiversity information system (NATURE)” (Korea National Arboretum, 2012).

2.5. Statistical analysis

All analyses were performed using the packages “nlme” (Pinheiro et al., 2013) and “vegan” (Oksanen et al., 2011) within the R statistical environment (version 2.15.2., R Core Team, 2013).

Principal component analysis (PCA) was used to provide an integrated analysis of the patterns of variation for soil physico-chemical

variables. PCA was carried out over the correlation matrix of soil data considering 13 variables (see Table 2 for detailed list). All variables were standardized before analysis to correct for different scales of measuring units. Differences between pre- and post-flood values were testing using a *t*-test.

Linear mixed models (LMMs) were used to evaluate the changes (size, diversity) in soil seed bank between flood events and five vegetation communities. In this analysis, flood (pre- and post-flood) and vegetation communities (5 levels) were treated as categorical fixed factors, and plot nested within sites were included as random factors to account for spatial autocorrelation (Pinheiro and Bates, 2000). All variables were log-transformed ($\log(x+1)$) before analysis.

The effect of flood events and vegetation communities on seed bank composition were also tested using permutational multivariate analysis of variance (PMAV, ‘adonis’ function; Oksanen et al., 2011). These analyses were performed first for all seeds found and then discerning between the three life-forms considered (i.e. annuals, biennials and perennials). The species-abundance matrix was log-transformed ($\log(x+1)$) to reduce the influence of the most abundant species. In these analyses, the five sub-samples from the same vegetation community were pooled to reduce the spatial heterogeneity of the seed banks. Bray–Curtis distance was used with 999 permutations. Finally, detrended correspondence analysis (DCA, ‘decorana’ function; Oksanen et al., 2011) was used to identify in ordination space the seed bank compositional differences between flood events and vegetation communities. To help the interpretation standard deviational ellipses of each flood event and vegetation community were used (‘ordiellipse’ function; Oksanen et al., 2011). Finally, the relationship between the species complement of the vegetation and the seed banks pre- and post-flood were estimated using Sørensen’s similarity index (‘vegdist’ function; Oksanen et al., 2011).

3. Results

3.1. Sediment deposition by the flood

The depth of sediment deposited in four of the plant communities varied between 14.6 and 18.8 cm; the exception was

Table 1
The depth and mass of sediments deposited on the five communities at the Amsa wetland on the Han River floodplain, Seoul (South Korea) during the 2006 flood ($n = 5$).

Sediment measure	Sites				
	Waterfront	Bank	<i>Salix</i> sp.	<i>Phragmites australis</i>	<i>Miscanthus sacchariflorus</i>
Depth (cm)	14.6 \pm 0.9	18.8 \pm 2.7	15.6 \pm 1.5	17.5 \pm 0.5	4.8 \pm 0.2
Weight (kg/m ²)	135 \pm 23	262 \pm 59	169 \pm 36	254 \pm 11	55 \pm 1

the *Miscanthus sacchariflorus* community (Ms) where sediment depth was lower (4.8 cm, Table 1). The mass of sediment deposited showed the same rank order as the sediment depth but with greater variation; greatest mass was found in the Bank (Bn) and *P. australis* communities (Pa), intermediate values in the Waterfront (Wf) and *Salix* sp. communities (Ss) and the least in the *M. sacchariflorus* community (Ms) (Table 1).

3.2. Change in soil physico-chemical properties before and after the flood

Most of the soil physico-chemical properties showed a significant difference between the pre- and post-flood conditions (Table 2). Five variables showed a consistent pattern after the flood event on all communities; soil moisture content, pH and extractable P concentration either stayed the same or increased after the flood, and extractable Na concentration and electrical conductivity decreased after the flood. The other variables showed an inconsistent pattern between communities; for example, the organic matter increased in three communities (Wf, Pa and Ms) and decreased in two others (Bn and Ss).

The PCA ordination of the soil physico-chemical variables provided a clearer interpretation of the changes caused by the flood; the first two PCA axes produced eigenvectors of 7.123 and 3.982 which explained 51% and 28% of the variance (Fig. 3). A clear gradient was found on axis 1 based on particle size, with increased clay and silt at the positive end of axis 1 and increased sand at the negative end (Fig. 3). The clay and silt end of this gradient was correlated with exchangeable Ca and Mg and the sand end was correlated with increasing pH. The gradient on axis 2 showed a high moisture content and extractable P at the negative end and electrical conductivity, exchangeable K and Na and total N at the positive end. The pre-flood communities were ordered along axis 1 in order (clay/silt to sand) Ms, Ss, Bn and Pa which were very close together and then the Wf. However, all of these communities had positive values on axis 2. After the flood all of the communities moved down axis 2 indicating an increase in moisture content and available P (Fig. 3). The rank order of communities along axis 1 also changed to: Ms, Wf and Pa which were very close together and then Ss and Bn. Ms and Pa moved more or less vertically downwards showing little shift on the clay-silt gradient but water front soils increased in silt/clay and both Bn and Ss increased in sand content.

3.3. Change in soil seed banks before and after the flood

3.3.1. Size and diversity

Overall, the pre-flood seed bank size contained seeds of 86 species corresponding to an overall seed density of $37,308 \pm 9508$ seeds m⁻². In contrast, after the post-flood seed bank was reduced significantly to 4702 ± 538 seeds m⁻² (t -value = 3.92, $P = 0.001$) of 57 species. Seed densities varied considerably between the five communities (Table 3). The reduction in overall seed number after the flood was only consistent for biennial life-form seeds (reduction = 7190 ± 1946 , t -value = 3.70, $P = 0.011$, Table 3), although in the case of annual and perennial seeds there was a significant flood \times plant community interaction (annuals F -value = 9.90, $P < 0.001$; Perennials F -value = 3.20, $P = 0.034$). Density of seed bank

was significantly or slightly reduced in annuals, biennials and perennials in all communities (Table 3, Fig. 4a and b).

Species number in seed bank was reduced from 86 to 57 species after the flood (Appendix 1). Thirty-nine species present in the pre-flood soil seed banks were absent post-flood, 10 new species were detected, and 47 species were present before and after the flood. Seed bank richness was influenced by the flood \times plant community interaction (F -value = 4.70, $P = 0.008$, Fig. 4c), showing a significant reduction in richness within the Wf, Bn, Pa and Ms communities after the flood (average reduction of 10 species per community), but there was no effect on the Ss community seed bank richness. The same patterns were observed analyzing for the richness of the three life-forms considered. On the other hand, the flood produced a significant increase in seed bank evenness in four communities (flood \times plant community interaction, F -value = 47.74, $P < 0.001$, Fig. 4d); only the Pa community maintained identical evenness values before and after the flood.

3.3.2. Compositional changes

The DCA of seed bank composition produced eigenvalues (λ) of 0.32, 0.25, 0.19 and 0.12, and gradient lengths (GL) of 2.61, 2.75, 3.15 and 1.90 for the first four axes, respectively. The sites biplot showed significant differences in the seed bank composition before and after the flood ($r^2 = 0.43$, $P = 0.008$; Fig. 5a and b); the pre-flood

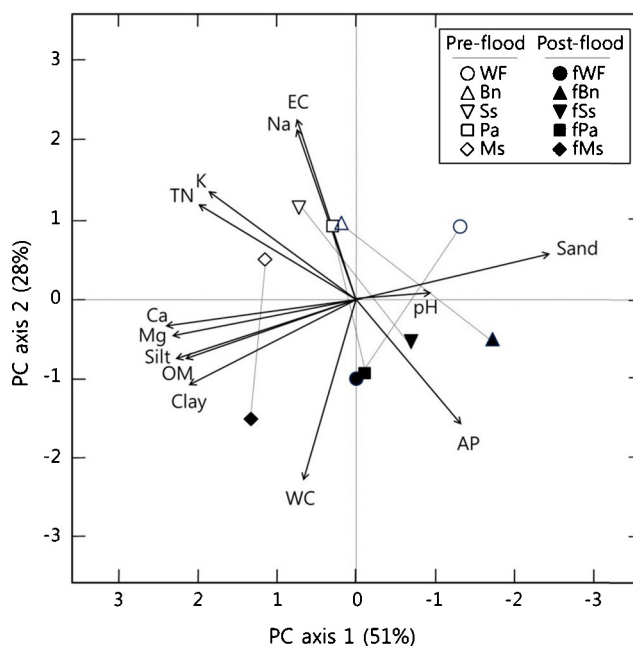


Fig. 3. Principal components analysis biplots between soil pre-flood ($n = 5$) and surface sediment post-flood ($n = 5$) at the same sites based on mean values of soil physico-chemical variables in the Amsa wetland of the Han River, Seoul, South Korea. Scores for the first two principal components are plotted (a) soil physico-chemical variables EP: extractable phosphorous; EC: electrical conductivity; OM: organic matter; TN: total nitrogen; MC: moisture content; Na: exchangeable Na; Mg: exchangeable Mg; K: exchangeable K; Ca: exchangeable Ca; (b) change in site soils before and after the flood; Wf: Waterfront; Bn: Bank; Ss: *Salix* sp.; Pa: *Phragmites australis*; Ms: *Miscanthus sacchariflorus*.

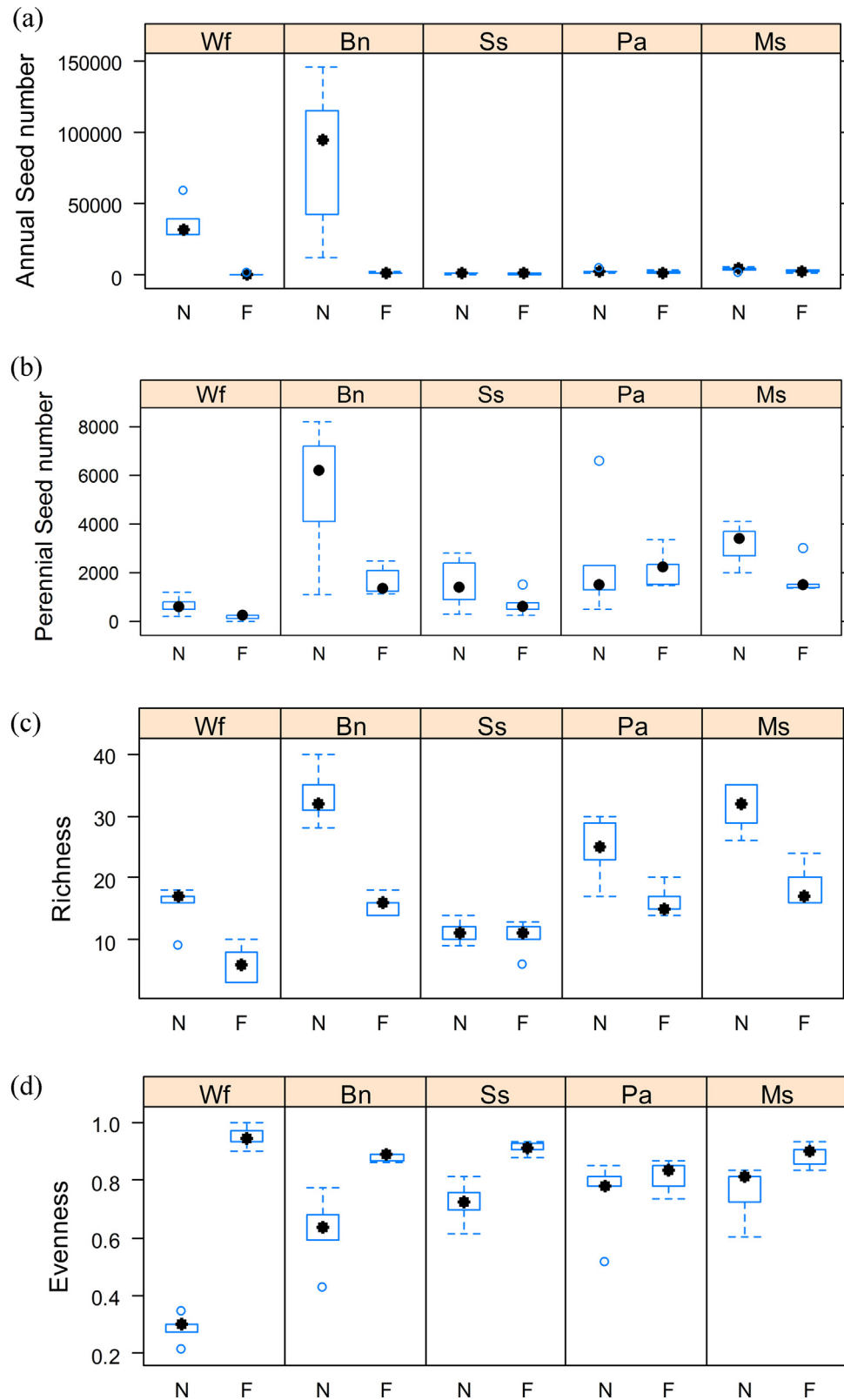


Fig. 4. Total seed number for (a) annual and (b) perennial species, (c) species richness and (d) evenness of the soil seed bank of pre- and post-flood soil within five communities at the Amsa wetland on the Han River, Seoul, South Korea. Codes are: Wf: Waterfront; Bn: Bank; Ss: *Salix* sp.; Pa: *Phragmites australis*; Ms: *Miscanthus sacchariflorus*; N: pre-flood seed bank; F: post-flood seed bank.

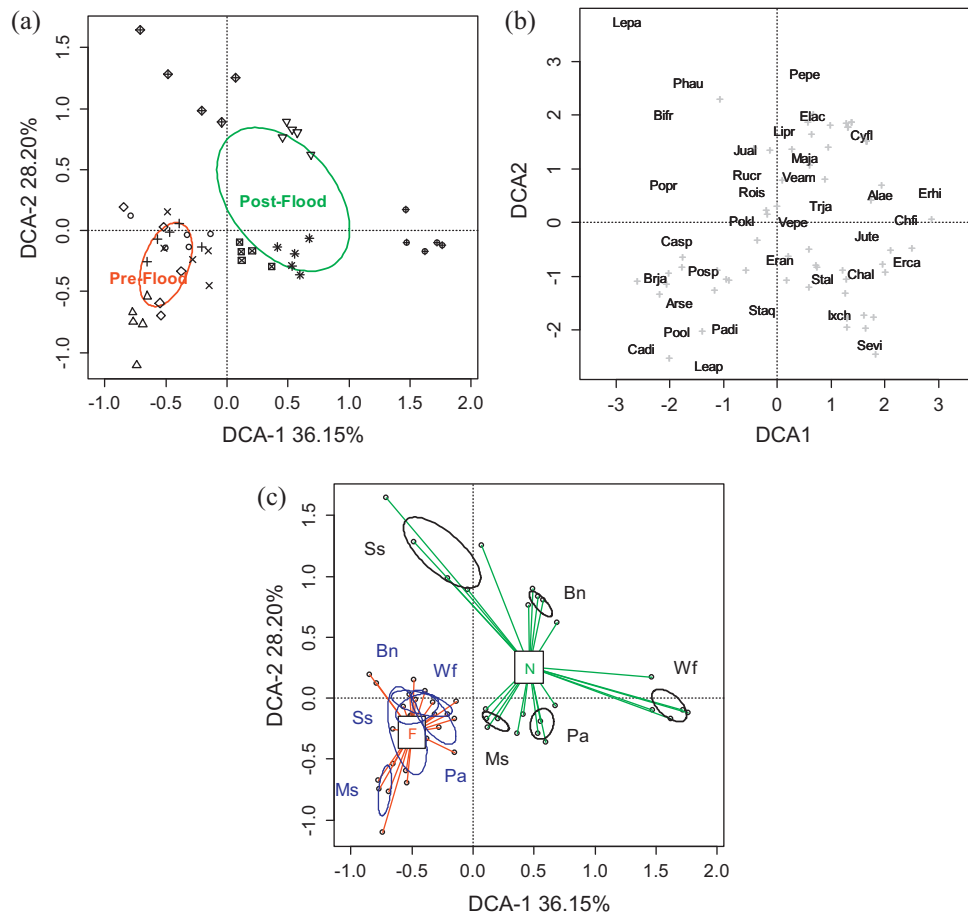


Fig. 5. DCA ordination of the soil seed bank of pre- and post-flood sites on the Han River flood plain, Seoul, South Korea. (a) Samples and flood events (pre-flood and post-flood) expressed as bivariate-deviational ellipses (95% confidence intervals); (b) most frequent species biplot; and (c) site interactive effects between pre- (N) and post-flood (F) plots expressed as bivariate-deviational ellipses. Key to species: Bifr: *Bidens frondosa*, Brja: *Bromus japonicus*, Chal: *Chenopodium album* var. *centrorubrum*, Chfi: *Chenopodium ficifolium*, Cyfl: *Cyperus flaccidus*, Elac: *Eleocharis acicularis* for. *longiseta*, Lipr: *Lindernia procumbens*, Maja: *Mazus japonicus*, Padi: *Panicum dichotomiflorum*, Pepe: *Persicaria perfoliata*, Pool: *Portulaca oleracea*, Rois: *Rotala indica*, Sevi: *Setaria viridis*, Alae: *Alopecurus aequalis* var. *amurensis*, Arse: *Arenaria serpyllifolia*, Eran: *Erigeron annuus*, Erca: *Erigeron canadensis*, Leap: *Lepidium apetalum*, Stal: *Stellaria alsine* var. *undulate*, Staq: *Stellaria aquatica*, Vepe: *Veronica peregrina*, Cadi: *Carex dimorpholepis*, Casp: *Carex* sp., Erhi: *Erechtites hieracifolia*, Ixch: *Ixeris chinensis* var. *strigosa*, Jual: *Juncus alatus*, Jute: *Juncus tenuis*, Lepa: *Lemna paucicostata*, Phau: *Phragmites australis*, Popr: *Poa pratensis*, Posp: *Poa sphondylodes*, Pokl: *Potentilla kleiniana*, Rucr: *Rumex crispus*, Trja: *Triadenum japonicum*, Veam: *Veronica americana*.

samples were located in the central right side of the ordination and were correlated with species such as *Persicaria perfoliata*, *Eleocharis acicularis* var. *longiseta*, *Cyperus flaccidus*, *Eclipta prostrata*, *Mazus japonicus*. In contrast, the post-flood samples were located at the negative end of axis 1 and were correlated with species such as *Arenaria serpyllifolia*, *Portulaca oleracea*, *Panicum dichotomiflorum*, *Bromus japonicus*, and *Carex dimorpholepis*. At the same time, there was an interaction between pre/post-flood and vegetation communities on seed bank communities ($r^2 = 0.93$, $P < 0.010$, Fig. 5c). In the pre-flood samples, there were significant differences in seed bank composition between the five communities ($r^2 = 0.70$, $P < 0.001$). However, after the flood the seed bank compositional differences were exclusively between Ms and the other communities ($r^2 = 0.40$, $P = 0.010$, Fig. 5c). These significant changes in seed bank composition produced by the flood were maintained if the life-form of the seeds was considered (Annuals $r^2 = 0.21$, $P = 0.013$; Biennials $r^2 = 0.26$, $P = 0.026$; Perennials $r^2 = 0.27$, $P = 0.010$).

The relationship between individual species in the seed bank were investigated further by calculating a ratio from the difference in seed densities in the pre- and post-flood samples and then dividing by the pre-flood densities (Fig. 6). This showed a clear separation into species that increased after flooding, and those that

declined. The species were classified on the basis of this analysis into three groups; those that showed (a) a large increase, (b) a small increase, and (c) a small decrease (Table 4). Of the common species, all except six were either classified as alien or ruderal species. Only six perennial species were classified as native wetland species (Table 4), two (*Scirpus radicans*, *Typha angustifolia*) showed an increase after flooding and four decreased (*Juncus alatus*, *Juncus effusus* var. *decipiens*, *Penthorum chinense*, *P. australis*) in the seed bank after the flood.

The similarity between the vegetation and pre-flood soil seed bank ranged from 21 to 60% (Wf = 32%, Bn = 52%, Ss = 60%, Pa = 42%, Ms = 21%), whereas the similarity after flood ranged from 9 to 50%, decreasing in all the areas except in Wf where similarity increased 18% (Wf = 50%, Bn = 43%, Ss = 47%, Pa = 33%, Ms = 9%).

4. Discussion

The riverine ecosystem, in many developed countries, has been highly modified and the Han River in South Korea is no exception (Kim et al., 2004). Upstream of Seoul the water flow is heavily controlled and within the city it is channelized and embanked (Woo, 2010) with very little river bank left with a high conservation value

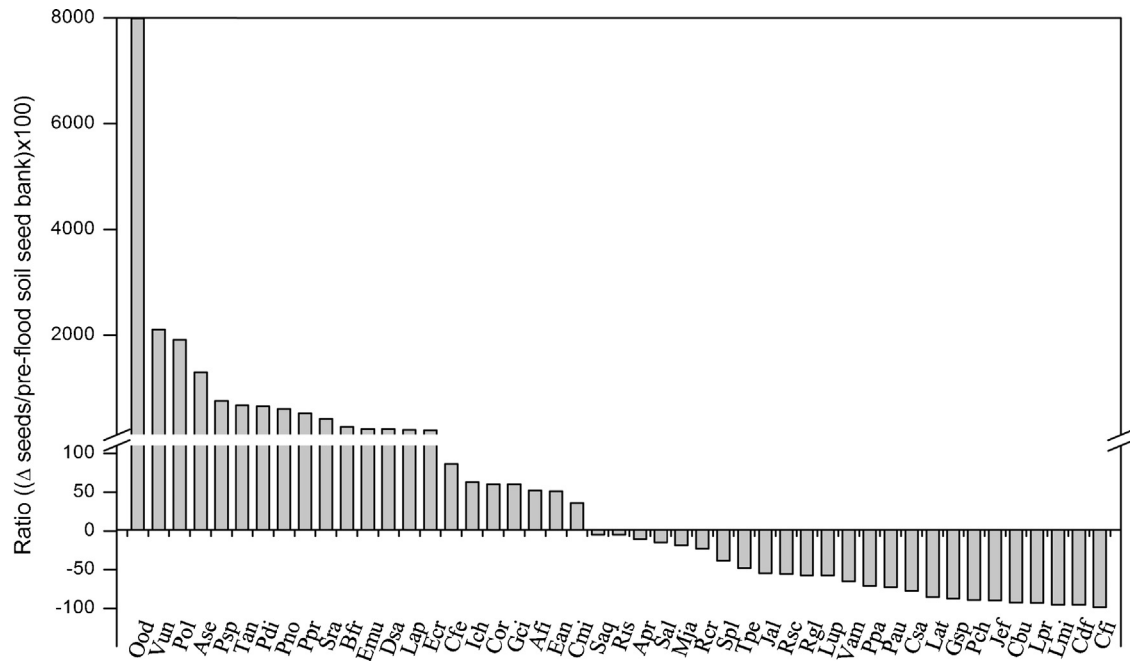


Fig. 6. Change of seedlings densities of common species of pre and post-flood soil within five communities at the Amsa wetland on the Han River, Seoul, South Korea. The ratio was the change in mean seed number after the flood (post-pre) over the number in the pre-flood soil expressed as a percentage. Key to species: Afi = *Androsace filiformis*, Apr = *Artemisia princeps* var. *orientalis*, Ase = *Arenaria serpyllifolia*, Bfr = *Bidens frondosa*, Cbu = *Capsella bursa-pastoris*, Cdf = *Cyperus difformis*, Cfe = *Cardamine flexuosa*, Cfi = *Chenopodium ficifolium*, Cmi = *Centipeda minima*, Cor = *Cyperus orthostachyus*, Csa = *Cyperus sanguinolentus*, Dsa = *Digitaria sanguinalis*, Ean = *Erigeron annuus*, Ecr = *Echinochloa crus-galli*, Emu = *Eragrostis multicaulis*, Gci = *Galinsoga ciliate*, Gsp = *Galium spurium*, Ich = *Ilex chinensis* var. *strigosa*, Jal = *Juncus alatus*, Jef = *Juncus effusus* var. *decipiens*, Lap = *Lepidium apetalum*, Lat = *Lindernia attenuata*, Lmi = *Lindernia micrantha*, Lpr = *Lindernia procumbens*, Lup = *Ludwigia prostrata*, Mja = *Mazus japonica*, Ood = *Oenothera odorata*, Pau = *Phragmites australis*, Pch = *Penthorum chinense*, Pdi = *Panicum dichotomiflorum*, Pno = *Persicaria nodosa*, Pol = *Portulaca oleracea*, Ppa = *Potentilla paradoxa*, Ppr = *Poa pratensis*, Psp = *Poa sphondyliodes*, Rcr = *Rumex crispus*, Rgl = *Rorippa globosa*, Ris = *Rorippa islandica*, Rsc = *Ranunculus sceleratus*, Sal = *Stellaria alsine* var. *undulata*, Saq = *Stellaria aquatica*, Spl = *Salvia plebeia*, Sra = *Scirpus radicans*, Tan = *Typha angustifolia*, Tpe = *Trigonotis peduncularis*, Vam = *Veronica americana*, Vun = *Veronica undulata*.

(Lee et al., 2011). In spite of this, the river is still subject to periodic floods, especially during the Typhoon season and here we investigated the impacts of a flood induced by Typhoon “Ewinari” at the Amsa conservation wetland on the Han River; this site is the last remaining refuge of semi-natural, riverine vegetation of conservation interest within Seoul (Lee et al., 2011). As such it provides a range of cultural ecosystem services (MEA, 2005) within the Seoul city landscape; as well as an aesthetic value there are potential educational opportunities as well as its intrinsic conservation value (Jeon et al., 2008). Accordingly information on how it responds to environmental pressures, such as flooding, is sorely needed.

An important result was the differences in the depth of sediment deposited in the communities during the flood; the four communities nearest the river had sediment deposited to between 14 and 19 cm depth, but even the landward community had a 4.8 cm deposition. Thus, flood events during the Typhoon season can produce very large, albeit variable, sediment inputs to these riverine communities as has been demonstrated elsewhere (Yang, 1999; Yamamoto and Chiba, 1994). Given that seed richness in the sediment bank has been shown to reduce from the river edge to mid-channel, and down the soil profile (Cui et al., 2013), the addition of sediment in such large quantities during flood, will inevitably change both the physico-chemical conditions of the surface and the surface seed bank profile. The latter can be brought about in two ways, through the importation of new species (Barrat-Segretain et al., 1998; Barrat-Segretain and Bornette, 2000) and through the burial of existing seeds present in the surface soil layers. Moreover, the action of the sediment deposition may also cause physical damage to existing vegetation thus creating disturbance and bare ground suitable for new species colonization (Amiaud and Touzard, 2004; Kalamees and Zobel, 2002). Taken together, there

are, therefore a range of processes through which extreme flooding can affect riverine communities and their seed banks, and hence their restoration potential and subsequent successional trajectories.

4.1. Effects of the flood on soil physico-chemical properties

Whilst there were significant differences in most of the soil physico-chemical properties between the pre- and post-flood conditions; soil moisture content, pH and extractable P concentration either remaining the same or increasing after the flood, or extractable Na concentration and electrical conductivity decreases. There were other variables showing inconsistent patterns between communities with some variables increasing in some communities and not others. Multivariate analysis helped interpret the effects showing a clear gradient between sites that was based on particle size (soils with greater clay and silt fractions at one end through to a greater sand component at the other). The second axis reflected a gradient of soils with a high moisture content and extractable P at the negative end and electrical conductivity, exchangeable K and Na and total N at the positive end. The pre-flood communities were ordered along axis 1 in order (clay/silt to sand) *M. sacchariflorus*, *Salix* sp., the Bank and *P. australis* which were very close together and then the Waterfront. After the flood the rank order of communities on this gradient changed indicating differential capture of different-sized sediments by the differing structures found in these plant communities. Specifically, the Waterfront increased in clay/silt and both the *Salix* sp. and bank communities moved to sandier condition. All the pre-flood soils had positive values on axis 2 and they moved down the axis indicating an increase in moisture content and available P. There is no doubt that the effects of the

Table 2

Physico-chemical properties of pre-flood and post-flood soil of five communities at the Amsa wetland on the Han River floodplain, Seoul (South Korea). The soil properties are coded: WC: moisture content; OM: organic matter; EC: electrical conductivity; TN: total nitrogen; AP: extractable phosphorous; Na: exchangeable sodium; Mg: exchangeable magnesium; K: exchangeable potassium; Ca: exchangeable calcium ($n = 5$, mean \pm S.E.). Significance level: *** = $P < 0.001$, ** = $P < 0.01$; Bonferroni correction was used to adjust for Type I error rate within each soil variable, hence $P < 0.01$ was taken as the minimum significant difference (Sokal and Rohlf, 1995).

Variable unit	Waterfront			Bank			Salix sp.			Phragmites australis			M. sacchariflorus			
	Pre	Post	t-Val	Pre	Post	t-val	Pre	Post	t-val	Pre	Post	t-val	Pre	Post	t-val	
Sand	%	85 ± 2	52 ± 5	5.1**	57 ± 4	87 ± 2	5.5***	46 ± 2	69 ± 4	4.2**	50 ± 6	50 ± 1	0.0	32 ± 3	18 ± 1	3.9**
Silt		12 ± 1	36 ± 4	5.1**	33 ± 3	10 ± 1	6.0***	41 ± 1	20 ± 3	5.4**	38 ± 4	35 ± 0	0.7	50 ± 2	57 ± 1	2.1
Clay		2 ± 0	11 ± 1	4.5**	9 ± 1	2 ± 1	3.9**	11 ± 0	10 ± 1	0.5	11 ± 2	15 ± 0	1.5	17 ± 1	25 ± 0	7.7***
WC		29 ± 1	75 ± 2	21.0***	32 ± 1	47 ± 2	6.1**	30 ± 0.4	52 ± 4	6.0**	30 ± 2	70 ± 2	14.2***	34 ± 0.4	107 ± 8	9.3***
OM		2.9 ± 0.4	6.8 ± 0	9.3***	5.8 ± 0.3	3 ± 0.3	6.3***	5.9 ± 0.2	4.2 ± 0.5	3.0	6 ± 0.5	6.4 ± 0.2	0.6	8.2 ± 0.3	9.5 ± 1.2	1.0
pH		6.7 ± 0.1	6.7 ± 0.02	0.2	6.7 ± 0.02	7.0 ± 0.1	4.3**	6.9 ± 0.02	6.8 ± 0.04	1.7	6.9 ± 0.02	7.0 ± 0.04	2.4	6.7 ± 0.1	6.7 ± 0.01	0.6
EC	mS/m	13.6 ± 1.5	2.2 ± 0.1	7.1***	25.6 ± 1.2	1.2 ± 0.1	19.4***	23.2 ± 1.6	1.8 ± 0.1	12.6***	16.8 ± 2.3	2 ± 0	6.4***	14.3 ± 0.6	2.1 ± 0.1	18.6***
TN	Mg/g	0.5 ± 0	0.8 ± 0	3.6	1.2 ± 0.1	0.5 ± 0	4.7**	1.8 ± 0	0.7 ± 0	9.4***	1.5 ± 0.1	0.9 ± 0	3.0	1.8 ± 0.1	1.1 ± 0	6.2***
AP	µg/g	16.7 ± 1.4	31.5 ± 5	2.8	18.5 ± 0.5	44.4 ± 3.6	6.9**	16.9 ± 1	29.6 ± 1	8.8***	18.8 ± 1.3	31.1 ± 2.7	3.9**	21.3 ± 1.5	22.5 ± 0.7	0.6
Na		367 ± 3	148 ± 2	52.5***	363 ± 1	145 ± 2	74.4***	386 ± 10	158 ± 1	20.4***	370 ± 3	161 ± 1	54.9***	411 ± 11	171 ± 6	17.9***
Mg		100 ± 11	224 ± 13	7.0***	227 ± 12	121 ± 1	8.4***	252 ± 18	207 ± 9	2.2	185 ± 25	250 ± 3	2.5	289 ± 23	315 ± 4	1.0
K		62 ± 6	127 ± 12	4.7**	233 ± 14	56 ± 2	12.0***	388 ± 33	100 ± 10	8.3***	334 ± 41	125 ± 4	4.9**	307 ± 24	191 ± 4	4.6**
Ca		662 ± 82	1544 ± 81	7.5***	1475 ± 59	686 ± 70	8.5***	1887 ± 68	1378 ± 62	5.4**	1533 ± 171	1779 ± 102	1.2	1925 ± 89	2095 ± 172	0.8

Table 3

Pre- and post-flood seeds number found in the seed bank of five communities (July 2006) at the Amsa wetland on the Han River floodplain, Seoul (South Korea). Results for the total number of species found and the number in three life-history categories (annual, biennial and perennial species) are presented.

Life-history category	Unit	Site flood	Waterfront		Bank		Salix spp.		P. australis		M. sacchariflorus		Grand total	
			Pre	Post	Pre	Post	Pre	Post	Pre	Post	Pre	Post	Pre	Post
Total	No. of seeds/m ²		105300 \pm 31498	5188 \pm 386	18360 \pm 1479	6401 \pm 741	16620 \pm 6708	7945 \pm 673	4020 \pm 524	2630 \pm 291	42240 \pm 6062	1347 \pm 368	37308 \pm 9508	4702 \pm 537
	No. of species		59	38	54	39	46	36	27	26	32	18	86	57
Annuals	No. of seeds/m ²		81900 \pm 24315	1267 \pm 271	3800 \pm 694	2181 \pm 506	2620 \pm 526	1667 \pm 465	860 \pm 147	601 \pm 139	37220 \pm 5804	291 \pm 229	25280 \pm 7865	1201 \pm 201
	No. of Species (%)		30 (51)	14 (37)	22 (41)	17 (44)	21 (46)	17 (47)	13 (48)	11 (42)	13 (41)	6 (33)	40 (47)	24 (42)
Biennials	No. of seeds/m ²		18040 \pm 6962	2261 \pm 331	11380 \pm 1696	2460 \pm 253	11560 \pm 5888	4094 \pm 486	1600 \pm 243	1301 \pm 123	4360 \pm 556	878 \pm 183	9388 \pm 2072	2199 \pm 259
	No. of species (%)		17 (29)	10 (26)	18 (33)	13 (33)	14 (30)	8 (22)	5 (19)	8 (31)	11 (34)	7 (39)	23 (27)	14 (25)
Perennials	No. of seeds/m ²		5360 \pm 1263	1660 \pm 265	3180 \pm 373	1760 \pm 316	2440 \pm 1079	2184 \pm 343	1560 \pm 463	729 \pm 214	660 \pm 166	178 \pm 52	2640 \pm 460	1302 \pm 184
	No. of species (%)		12 (20)	14 (37)	14 (26)	9 (23)	11 (24)	11 (31)	9 (33)	7 (27)	8 (25)	5 (28)	23 (27)	19 (33)

Table 4

Change in seedling densities of common species between of pre and post-flood soil within five communities at the Amsa wetland on the Han River floodplain, Seoul, South Korea ($n = 5$). A: Alien, W: Wetland, R: Ruderal (weed), M: Monocotyledon, D: Dicotyledon.

Life history category	(a) Large increase ratio > 100	(b) Small increase ratio < 100	(c) Small decrease (negative ratios) ratio ≤ 100
Annuals	<i>Bidens frondosa</i> (ARW) D <i>Digitaria sanguinalis</i> (R) M <i>Echinochloa crus-galli</i> (RW) M <i>Eragrostis multicaulis</i> (R) M <i>Panicum dichotomiflorum</i> (AR) M <i>Persicaria nodosa</i> (RW) D <i>Portulaca oleracea</i> (R) D	<i>Androsace filiformis</i> (RW) D <i>Centipeda minima</i> (R) D <i>Cyperus orthostachyus</i> (RW) M	<i>Capsella bursa-pastoris</i> (R) D <i>Chenopodium ficifolium</i> (AR) D <i>Cyperus difformis</i> (RW) M <i>Cyperus sanguinolentus</i> (RW) M <i>Lindernia attenuata</i> (AR) D <i>Lindernia micrantha</i> (RW) D <i>Lindernia procumbens</i> (RW) D <i>Ludwigia prostrata</i> (RW) D <i>Mazus japonicus</i> (R) D <i>Ranunculus sceleratus</i> (RW) D <i>Galium spurium</i> (R) D <i>Rorippa islandica</i> (R) D <i>Salvia plebeia</i> (R) D <i>Stellaria alsine</i> var. <i>undulata</i> (RW) D <i>Stellaria aquatica</i> (RW) D <i>Trigonotis peduncularis</i> (R) D
Biennials	<i>Arenaria serpyllifolia</i> (R) D <i>Lepidium apetalum</i> (AR) D <i>Oenothera odorata</i> (AR) D <i>Veronica undulata</i> (RW) D	<i>Cardamine flexuosa</i> (RW) D <i>Erigeron annuus</i> (AR) D <i>Galinso gaciliata</i> (AR) D	<i>Artemisia princeps</i> var. <i>orientalis</i> (R) D <i>Juncus alatus</i> (W) M <i>Juncus effusus</i> var. <i>decipiens</i> (W) M <i>Penthorum chinense</i> (W) D <i>Phragmites australis</i> (W) M <i>Potentilla paradoxa</i> (AR) D <i>Rorippa globosa</i> (RW) D <i>Rumex crispus</i> (ARW) D <i>Veronica americana</i> (ARW) D
Perennials	<i>Poa pratensis</i> (AR) M <i>Poa sphondyliodes</i> (AR) M <i>Scirpus radicans</i> (W) M <i>Typha angustifolia</i> (W) M	<i>Ixeris chinensis</i> var. <i>strigosa</i> (R) D	

flood changed the soil properties which may limit vegetation germination and development in these areas. The importance of these change for vegetation has been shown in similar flooding studies (Roberts and Marston, 2011), where changes in pH and electrical conductivity were limiting factors for vegetation. At the same time, these soil changes may reflect merely physical forces with respect of sediment deposition, which is known to occur in floodplains at a range of spatial scales (Walling and He, 1998). However, it may also reflect an interaction with the vegetation structure (Corenblit et al., 2009; Gurnell et al., 2006), as sediment deposition differed between the communities. We suggest that some of this variation would result from differential interception induced by the different vegetation types; i.e. from sparse plant cover at the Waterfront, through dense grass stands (*M. sacchariflorus* and *P. australis*) to the shrub-dominated *Salix* sp. communities (Lee et al., 2011).

4.2. Impacts of the flood on seed banks

The immediate impact of flooding was to reduce the differences in species diversity between the plant communities (Asaeda et al., 2011; Hölzel and Otte, 2004; Uchida et al., 2012), as well as to produce a compositional homogenization in post-flood seed bank in comparison with pre-flood seed bank. In particular, the seed banks of the pre-flood soils showed a heterogeneous distribution pattern, probably because at least some seed inputs to the soil resulted from local dispersal from nearby parent plants (Hölzel and Otte, 2001; Willems and Bik, 1998). Before the flood the most diverse communities were the ones nearest the river, whereas after the flood they appeared more similar, essentially they suffer a biotic homogenization (Smart et al., 2006). Thus, immediately after the flood the differences between the communities in diversity and composition were reduced. The flood also impinged on species with different life-history strategies, similar results has been shown in flow-meadows in Europe subjected to flood regimes (Hölzel and Otte, 2004). All life-history categories were reduced on the river bank; both annuals and perennials were affected in the

intermediate *Salix* woodland and the *P. australis* communities, but annuals were most affected in the *M. sacchariflorus* community.

Overall, the Sørensen similarity between standing vegetation and the pre- and post-flood seed bank was relatively low, and this appears typical in wetland studies (Capon and Brock, 2006). However, it is important to highlight that the similarity between the standing vegetation and seed bank was reduced after flood event (10% in average), except in the Wf area where similarity increased 10% by an increase of perennial species. The result of discrepancy between above-ground vegetation and seed bank are common in repeatedly disturbed environment such as wetland ecosystem (Capon and Brock, 2006).

The effect of the flood would be expected to increase seed inputs on the sites nearest the river (Gurnell et al., 2008), which are exposed to a greater degree of flooding than sites farthest from the river channel (Capon and Brock, 2006). This was not apparent here, as there was a reduction in the total number of species detected in the soil seed bank, and all life-history categories were reduced in most communities. There were small increases in biennials in the *P. australis* community and perennials in the Waterfront; the number of perennials remained the same in the *Salix* woodland. Here, we also classified species according to change in seed bank numbers after flooding, since similar studies in flood-meadows have reported great reductions in seed bank species after floods (Hölzel and Otte, 2004). Overall, our results were complex, with some species increasing markedly after flooding and some decreasing. However, as remarkable result highlights that most of the species that increased in the seed bank after flooding were either aliens or ruderal species, in contrast to what has been shown in European flood meadows where ruderal species invasion was not very common (Hölzel and Otte, 2004). Here only two species of conservation interest increased in the seed bank (*S. radicans*, *T. angustifolia*). Thus these results suggest that after extreme flood events the compositional homogenization of seed bank is mainly produced by common and ruderal species, with little input of conservation interest species. As a consequence, seed bank homogenization

might have a negative effect on future successional trajectories of these communities, if the interest species seed bank is not properly restored.

The seed bank of the Amsa river reservoir can be considered as the only potential source of seeds for restoration of this and similar wetland communities. However, after extreme floods events the sediments deep can compromise the seed bank regeneration potential (i.e. deep prevented seedling emergence), being the extant vegetation of interest the main source of the seeds for the seed bank regeneration (González-Alday et al., 2009). Thus, conservation actions after extreme flooding must focus on (1) the recovery of vegetation structure and (2) on the reduction of sediments deep facilitating previous seed bank seedling emergence, being both of them vital for the maintenance of these areas. In any case, the lack of good amounts of interest species in flood sediments limits the use of the sediments found in this area for future restoration projects of vegetation refugees in Han River.

5. Conclusions

Flooding is the major disturbance of these riparian ecosystems, inducing change to the topography of river channel. In urban areas where riparian vegetation remnants are the only vegetation of conservation interest remaining, understanding the impacts that floods have on these ecosystems is needed to inform their future conservation. Our results showed that immediately after the flood, the species richness were reduced in both the above-ground vegetation (1–10 species; Lee, 2010) and seed banks (1–21 species). In addition, the flood transported a large amount of sediment containing some seeds over the floodplain, with an overall homogenizing effect (species composition and diversity); indeed after the flood there was a 9–50% similarity (Lee, 2010). Furthermore, the flood sediment (4.8–18.8 cm depth) had a low seed density and this prevented germination from the underlying pre-flood soil later and hence encouraging those species with vegetative propagation. Our results suggest that extreme floods can impinge on the riparian vegetation by removing wetland plant species and allowing common, ruderal or perennial wetland species to persist, mainly because the reproductive patterns of these perennials occur by vegetative propagation rather than seeds. These results, therefore, inform conservation management policies for maintaining of semi-natural areas in reaches of urban rivers such as the Han River in South Korea that are subject to substantial flooding.

Acknowledgements

We thank J.S. Park and K. Lee from the Plant Ecology Laboratory, Seoul National University for technical support. This study was supported by the CAER (Center for Aquatic Ecosystem Restoration) of Eco-STAR project from the Ministry of Environment, Republic of Korea and basic science research program through the NRF (National Research Foundation of Korea) funded by the Ministry of Education (NRF-2013R1A1A2058596), Republic of Korea.

References

- Abernethy, V.J., Willby, N.J., 1999. Changes along a disturbance gradient in the density and composition of propagule banks in floodplain aquatic habitats. *Plant Ecol.* 140, 177–190.
- Alves Pagotto, M., de Moraes Lima Silveira, R., Nunes da Cunha, C., Fantin-Cruz, I., 2011. Distribution of herbaceous species in the soil seed bank of a flood seasonality area, Northern Pantanal. *Braz. Int. Rev. Hydrobiol.* 96, 149–163.
- Amiaud, B., Touzard, B., 2004. The relationships between soil seed bank, above-ground vegetation and disturbances in old embanked marshlands of Western France. *Flora* 199, 25–35.
- APHA, 1992. Standard Methods for the Examination of Water and Wastewater, 18th ed. APHA, Washington, DC.
- Asaeda, T., Rashid, M.H., Kotagiri, S., Uchida, T., 2011. The role of soil characteristics in the succession of two herbaceous lianas in a modified river floodplain. *River Res. Appl. Ins.* 27, 591–601.
- Asano, S., 2005. Seeds/Fruits and Seedlings of Plants in Japan. Zenkoku-Noson-Kyoiku-Kyokai, Tokyo.
- Barrat-Segretain, M.H., Bornette, G., 2000. Regeneration and colonization abilities of aquatic plant fragments: effect of disturbance seasonality. *Hydrobiologia* 421, 31–39.
- Barrat-Segretain, M.H., Bornette, G., Hering-Vilas-Bôas, A., 1998. Comparative abilities of vegetative regeneration among aquatic plants growing in disturbed habitats. *Aquat. Bot.* 60, 201–211.
- Capon, S.J., Brock, M.A., 2006. Flooding, soil seed bank dynamics and vegetation resilience of a hydrologically variable desert floodplain. *Freshwater Biol.* 51, 206–223.
- Chang, H., 2005. Spatial and temporal variations of water quality in the Han River and its tributaries, Seoul, Korea, 1993–2002. *Water Air Soil Pollut.* 161, 267–284.
- Cho, H.-J., Cho, K.-H., 2005. Responses of riparian vegetation to flooding disturbance in a sand stream. *KSCE J. Civ. Eng.* 9, 49–53.
- Cockell, C., Gurnell, A., 2012. An investigation of the composition of the urban riparian soil propagule bank along the River Brent, Greater London, UK, in comparison with previous propagule bank studies in rural areas. *Urban Ecosyst.* 15, 367–387.
- Corenblit, D., Steiger, J., Gurnell, A.M., Naiman, R.J., 2009. Plants intertwine fluvial landform dynamics with ecological succession and natural selection: a niche construction perspective for riparian systems. *Global Ecol. Biogeogr.* 18, 507–520.
- Eldridge, D.J., Lunt, I.D., 2010. Resilience of soil seed banks to site degradation in intermittently flooded riverine woodlands. *J. Veg. Sci.* 21, 157–166.
- FISRWG 1998, 1998. Stream Corridor Restoration: Principles, Processes, and Practices. Federal Interagency Stream Restoration Working Group, Washington, DC.
- Gergel, S.E., Turner, M.G., Miller, J.R., Melack, J.M., Stanley, E.H., 2002. Landscape indicators of human impacts to riverine systems. *Aquat. Sci.—Res. Across Boundaries* 64, 118–128.
- González-Alday, J., Marrs, R.H., Martínez-Ruiz, C., 2009. Soil seed bank formation during early revegetation after hydroseeding in reclaimed coal wastes. *Ecol. Eng.* 35, 1062–1069.
- Gurnell, A., Thompson, K., Goodson, J., Moggridge, H., 2008. Propagule deposition along river margins: linking hydrology and ecology. *J. Ecol.* 96, 553–565.
- Gurnell, A.M., Boitsidis, A.J., Thompson, K., Clifford, N.J., 2006. Seed bank, seed dispersal and vegetation cover: colonization along a newly-created river channel. *J. Veg. Sci.* 17, 665–674.
- Hölzel, N., Otte, A., 2001. The impact of flooding regime on the soil seed bank of flood-meadows. *J. Veg. Sci.* 12, 209–218.
- Hayashi, H., Shimatani, Y., Shigematsu, K., Nishihiro, J., Ikematsu, S., Kawaguchi, Y., 2012. A study of seed dispersal by flood flow in an artificially restored floodplain. *Landscape Ecol. Eng.* 8, 129–143.
- Heiri, O., Lotter, A.F., Lemcke, G., 2001. Loss on ignition as a method for estimating organic and carbonate content in sediments: reproducibility and comparability of results. *J. Paleolimnol.* 25, 101–110.
- Jeon, S., Nam, J., Choi, H., Ju, E., Yoon, J., Kim, J., 2008. Monitoring for wetlands ecosystem conservation and management in urban: a case study at Dunchon-dong wetland. *Korean J. Nat. Conserv.* 6, 127–142.
- Jutila, H.M., 2001. Effect of flooding and draw-down disturbance on germination from a seashore meadow seed bank. *J. Veg. Sci.* 12, 729–738.
- Kalamees, R., Zobel, M., 2002. The role of the seed bank in gap regeneration in a calcareous grassland community. *Ecology* 83, 1017–1025.
- Karr, J.R., Chu, E.W., 2000. Sustaining living rivers. *Hydrobiologia* 422–423, 1–14.
- Kim, J.G., Ju, E.J., 2005. Soil seed banks at three ecological preservation areas in Seoul. *J. Ecol. Field Biol.* 28, 271–279.
- Kim, L.H., Choi, E., Gil, K.I., Stenstrom, M.K., 2004. Phosphorus release rates from sediments and pollutant characteristics in Han River, Seoul, Korea. *Sci. Total Environ.* 321, 115–125.
- Kim, S.J., 2008. A study on the variation of groundwater level in the Han River estuary (the effect of the removing of a weir). *J. Korean Soc. Coastal Ocean Eng.* 20, 589–601.
- Korea National Arboretum, 2012. Korea Biodiversity Information System (NATURE). Korea National Arboretum, Kyeonggi-do, Korea.
- Lee, H.H.M., 2010. Spatial variation of soil seed bank in downstream floodplains of the Han River. Seoul National University, Seoul.
- Lee, H.H.M., Marrs, R.H., Lee, E.J., 2011. The variation in the species composition of the soil seed bank in the natural flood plain vegetation along the urban reach of Han River, South Korea. *Korean J. Limnol.* 44, 42–57.
- Lee, T.B., 1999. Illustrated Flora of Korea. Hyangmoonsa Co, Seoul.
- Looney, P.B., Gibson, D.J., 1995. The relationship between the soil seed bank and above-ground vegetation of a coastal barrier island. *J. Veg. Sci.* 6, 825–836.
- MEA, 2005. Millennium Ecosystem Assessment: Synthesis, Ecosystems and Human Well-being. <http://www.millenniumassessment.org/documents/document.356.aspx.pdf> (accessed 1/2/2013).
- Naiman, R.J., Decamps, H., Pollock, M., 1993. The role of riparian corridors in maintaining regional biodiversity. *Ecol. Appl.* 3, 209–212.
- Cui, N., Wu, J., Xiang, D., Cheng, S., Zhou, Q., 2013. A field study on seed bank and its potential applications in vegetation restoration of a polluted urban river in China. *Ecol. Eng.* 60, 37–44.
- Oksanen, J., Blanchet, F., Kindt, R., Legendre, P., O'Hara, R., Simpson, G., Solymos, P., Stevens, M., Wagner, H., 2011. Vegan: community ecology package. In: R Package Version 1.17-8, <http://CRAN.R-project.org/package=vegan>.

- Hölzel, N., Otte, A., 2004. Inter-annual variation in the soil seed bank of flood-meadows over two years with different flooding patterns. *Plant Ecol.* 174, 279–291.
- Paul, M.J., Meyer, J.L., 2008. Streams in the urban landscape. In: Marzluff, J.M., Shulenberger, E., Endlicher, W., Alberti, M., Bradley, G., Ryan, C., Simon, U., ZumBrunnen, C. (Eds.), *Urban Ecology*. Springer, New York, NY, pp. 207–231.
- Pinheiro, J.C., Bates, D.M., 2000. *Mixed-effects Models in S and S-PLUS*. Springer, New York, NY.
- Pinheiro, J., Bates, D., DebRoy, S., Sarkar, D., R Core Team, 2013. *Nlme: linear and nonlinear mixed effects models*. In: R Package Version 3.1-113, <http://CRAN.R-project.org/package=nlme>.
- R Core Team, 2013. *R: A Language and Environment for Statistical Computing*. R Foundation for Statistical Computing, Vienna, Austria, <http://www.R-project.org/>.
- Riis, T., Baattrup-Pedersen, A., 2011. Spatial distribution and temporal dynamic of the seed pool in a Danish lowland stream. *Aquat. Bot.* 94, 188–192.
- Roberts, J., Marston, F., 2011. *Water regime for wetland and floodplain plants: a source book for the Murray–Darling Basin*. National Water Commission, Canberra.
- Schmidt, J.C., Parnell, R.A., Grams, P.E., Hazel, J.E., Kaplinski, M.A., Stevens, L.E., Hoffnagle, T.L., 2001. The 1996 controlled flood in Grand Canyon: flow, sediment transport, and geomorphic change. *Ecol. Appl.* 11, 657–671.
- Sheldrick, B.H., Wang, C., 1993. Particle size distribution. In: Carter, M.R. (Ed.), *Soil Sampling and Methods of Analysis*. Canadian Society of Soil Science, Lewis Publishers, London, pp. 499–509.
- Sims, J.T., Maguire, R.O., Leytem, A.B., Gartley, K.L., Pautler, M.C., 2002. Evaluation of mehlisch 3 as an agri-environmental soil phosphorus test for the mid-Atlantic United States of America. *Soil Sci. Soc. Am. J.* 66, 2016–2032.
- Smart, S.M., Thompson, K., Marrs, R.H., Le Duc, M.G., Maskell, L.C., Firbank, L.G., 2006. Biodiversity loss and biotic homogenization across human-modified ecosystems. *Proc. R. Soc. Ser. B* 273, 2659–2665.
- Sokal, R.R., Rohlf, F.J., 1995. *Biometry: The Principles and Practice of Statistics in Biological Research*, 3rd ed. W.H. Freeman, New York, NY.
- Stromberg, J., Butler, L., Hazelton, A., Boudell, J., 2011. Seed size, sediment, and spatial heterogeneity: post-flood species coexistence in dryland riparian ecosystems. *Wetlands* 31, 1187–1197.
- Uchida, T., Nomura, R., Asaeda, T., Rashid, M.H., 2012. Co-existence of *Sicyos angulatus* and native plant species in the floodplain of Tama River, Japan. *Int. J. Biodivers. Cons.* 4, 336–347.
- Van Looy, K., Jacquemyn, H.J., Breyne, P., Honnay, O., 2009. Effects of flood events on the genetic structure of riparian populations of the grassland plant *Origanum vulgare*. *Biol. Conserv.* 142, 870–878.
- van derValk, A.G., Swanson, S.D., Nuss, R.F., 1983. The response of plant species to burial in three types of Alaskan wetlands. *Can. J. Bot.* 61, 1150–1164.
- Walling, D.E., He, Q., 1998. The spatial variability of overbank sedimentation on river floodplains. *Geomorphology* 24, 209–223.
- Willems, J.H., Bik, L.P.M., 1998. Restoration of high species density in calcareous grassland: the role of seed rain and soil seed bank. *Appl. Veg. Sci.* 1, 91–100.
- Woo, H., 2010. Trends in ecological river engineering in Korea. *J. Hydro-environ. Res.* 4, 269–278.
- Yamamoto, S., Chiba, T., 1994. Sedimentation of terrigenous red soils in coastal area adjacent to an estuary and coral reefs, the Okkubi River estuary, Okinawa Island, Japan. *J. Oceanogr.* 50, 423–435.
- Yang, S.L., 1999. Tidal wetland sedimentation in the Yangtze Delta. *J. Coastal Res.* 15, 1091–1099.
- Yarie, J., Viereck, L., van Cleve, K., Adams, P., 1998. Flooding and ecosystem dynamics along the Tanana River. *BioScience* 48, 690–695.
- Yoo, J.C., Choi, Y.S., 2007. Current status of birds of the Amsa-dong ecological landscape protected area in Seoul (2003–2005). *Bull. Korea Instrum. Ornithol.* 10, 11–19.